



Hatzalah EMS Rolls in Waterbury



Photo above: Hatzalah of New York City unit posted in the Flatbush neighborhood.

After years of preparation, coordination, and legislative changes, Hatzalah of Waterbury has been granted an EMS licensure. The Orthodox Jewish community in the city has been working with and alongside the existing first responders and EMS agencies since they established a strong presence in Waterbury over a decade ago.

Globally, Hatzalah has a robust EMS system in areas with large concentrations of orthodox Jewish people. Although present in Jewish communities throughout the country, Hatzalah provides emergency medical services to anyone who requests them. “We are grateful to the Waterbury EMS community for always serving us and look forward to working alongside them for many years to come. We appreciate their understanding and sensitivity to our culture, customs, and religious values”, said Yitz Rabinowitz, Hatzalah’s Chief. “The support of Mayor O’Leary and his staff, as well as the support and hard work by Senator Joan Hartley and State Representative Ron Napoli Jr and all state legislative delegation made this dream a reality for us.”

The Department of Health/Office of Emergency Medical Services granted licensure to Hatzalah EMS for two BLS ambulances and two ALS fly cars. They will respond to emergency calls in Waterbury along with Fire Department and other agencies. Hatzalah, Hebrew for rescue, Originated in Brooklyn, NY, in the 1960s. It is the largest volunteer EMS agency in the United States, with branches in almost every Orthodox area. Each Hatzalah division operates independently of the other but uses the common name and mission statement



Top left: Two Hatzalah EMS ambulances are parked at Waterbury Hospital ED entrance. Both ambulances have been inspected and certified by OEMS.

Above: Waterbury Hospital ED Nurse Manger Sherrilava gives Hatzalah EMS members a tour of the department and provides them with process and flow information in preparation for their system launch.



Recognizing Pre-Hospital Excellence

STROKE

In the morning on 11/3 **AMR** Crew EMT **Denny Graziano** and Paramedic **Dennis Posila** activated a stroke alert from the field for a patient experiencing chest pain which lead to a severe headache with visual disturbances. Our ED team including stroke coordinator Kathryn Myers met them at the door for a brief assessment and the patient was taken to CT where it was determined the patient was experiencing an acute ischemic stroke and the patient received Tenecteplase in 52 minutes and discharged home after a short stay with no residual deficit. Great job at saving someone's brain!

In the late afternoon on 11/9, **Beacon Hose Company** crew of **Connor Banks, Christian Hotchkiss** and **Brandon Jan-kowics** activated a stroke alert from the field with a patient presenting with right sided gaze, aphasia and left sided hemiparesis. Last known well was at 14:30, EMS was activated as soon as the patient was found and they arrived to the ED at 15:36. The BHC crew intercepted with **Naugatuck Medic Ray Beach** enroute. When in CT, the patient was discovered to have an occlusion of the middle cerebral artery and received Tenecteplase in 42 minutes! This patient was then transferred out to a Comprehensive Stroke Center in 84 minutes! Great work from all.

On 11/21 **Thomaston EMS** activated a stroke alert from the field with a patient who was experiencing an acute onset of left facial droop and left hemiparesis. Onset of symptoms was 18:30 and the patient arrived to the ED at 19:10. The patient was found to be experiencing a middle cerebral artery occlusion and was given Tenecteplase in 52 minutes and transferred out by helicopter to Yale for intervention.

AMR Paramedic **Amanda Jones** and EMT **Christopher Sodano** initiated a "Stroke Alert" from the field recognizing the sudden onset of focal neurological deficits and other acute signs/symptoms of a LVO utilizing the Rapid Arterial Occlusion Evaluation (R.A.C.E.) Scale. Kathryn Myers, Waterbury Hospital Stroke Program Coordinator noted Paramedic Jones and EMT Sodano did a phenomenal job recognizing and providing emergency care for the Stroke Patient involving a LVO of the Middle Cerebral Artery. The Emergency Department Physician ordered administration of Tenecteplase to treat the occlusion and further stabilized the patient. The patient is recovering well.

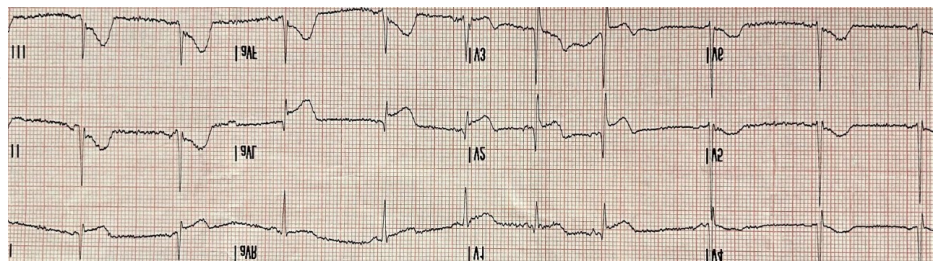
FIELD DELIVERY

On 11/23, **AMR** Paramedic **John Racloz**, EMT **Michael Messenger**, Paramedic Student **Michael Fitch** and members of **Waterbury Fire Department** - Engine 8 responded to a 911 involving a pregnancy. When they arrived they found the father assisting mother in active labor and delivery in the front seat of their car. The quick actions of FD Engine 8 crew & AMR resulted in a success delivery of baby and continued excellent care for the mother.

Waterbury Hospital was alerted by Paramedic Racloz. AMR Operations Supervisor **Ray Kennedy** responded to assist crew members at the Emergency Department. The Waterbury Hospital Neonatal Team was activated and quickly arrived in the ED and further stabilized the baby. Emergency Department Physicians and Nurses provided immediate medical care for mom.

STEMI

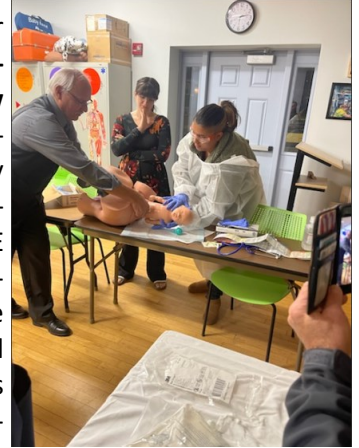
On 11/15, **Naugatuck EMS** responded to the **Naugatuck Fire Department** HQ to find **Deputy Fire Chief Kenneth Hanks** and Fire Department Members providing emergency care for a patient who stopped in front of the fire station for help experiencing acute onset of chest pain. Naugatuck EMS Paramedic **Heather Lee** and Paramedic **Ray Beach** and BLS crew of EMT **William Shaw** and EMT **Kristen Bellemare** provided care and rapid transport to Waterbury Hospital. Paramedic Lee immediately noted 12 Lead ECG identified as an Inferior Wall MI and activated a STEMI Alert. Upon arrival to the ED patient was immediately transferred to the Cath Lab and treated for a 50% occlusion of the Left Anterior Descending Artery and 100% occlusion of the Circumflex Artery. The patient was successfully discharged and is recovering well!



CME Series Brings Experts to EMS Agencies



Dr. Brooke Redmond, Medical Director for the **Waterbury Hospital Newborn Intensive Care Unit (NICU)** and **Yale New Haven Hospital Pediatric/NICU** in collaboration with José Matias, Emergency Medical Services Coordinator for Waterbury Hospital presented a two-hour CME session on Neonatal and Pediatric Emergencies at the Seymour Ambulance Training Center. The CME was attended by Seymour EMS members as well as members of area EMS agencies and Waterbury Hospital staff.



"One of the best and most beneficial sessions I've been to in a long time if not ever", said SEMS Training Director Lee Ives. "Dr. Redmond is amazing".

Waterbury Hospital is pleased to visit area EMS agencies with medical experts to conduct live training at no cost. If interested, please contact EMS Coordinator Jose Matias by email at jo-se.matias@wtbyhosp.org.

VAD CME



The November CME featured **Kelly McNamara - Diorio** and **Amanda Maxfield** of the **Hartford Hospital** for the Center for Advanced Heart Failure and Pulmonary Vascular Disease. The two RNs gave hands on demonstration of the Ventricular Assist Device and explained the handling of the devices for EMS providers.



All Waterbury Hospital CMEs are presented live in the Bizzozero Conference Room and are available on video at

www.waterburyhospital.org/all-services/emergency-department/